

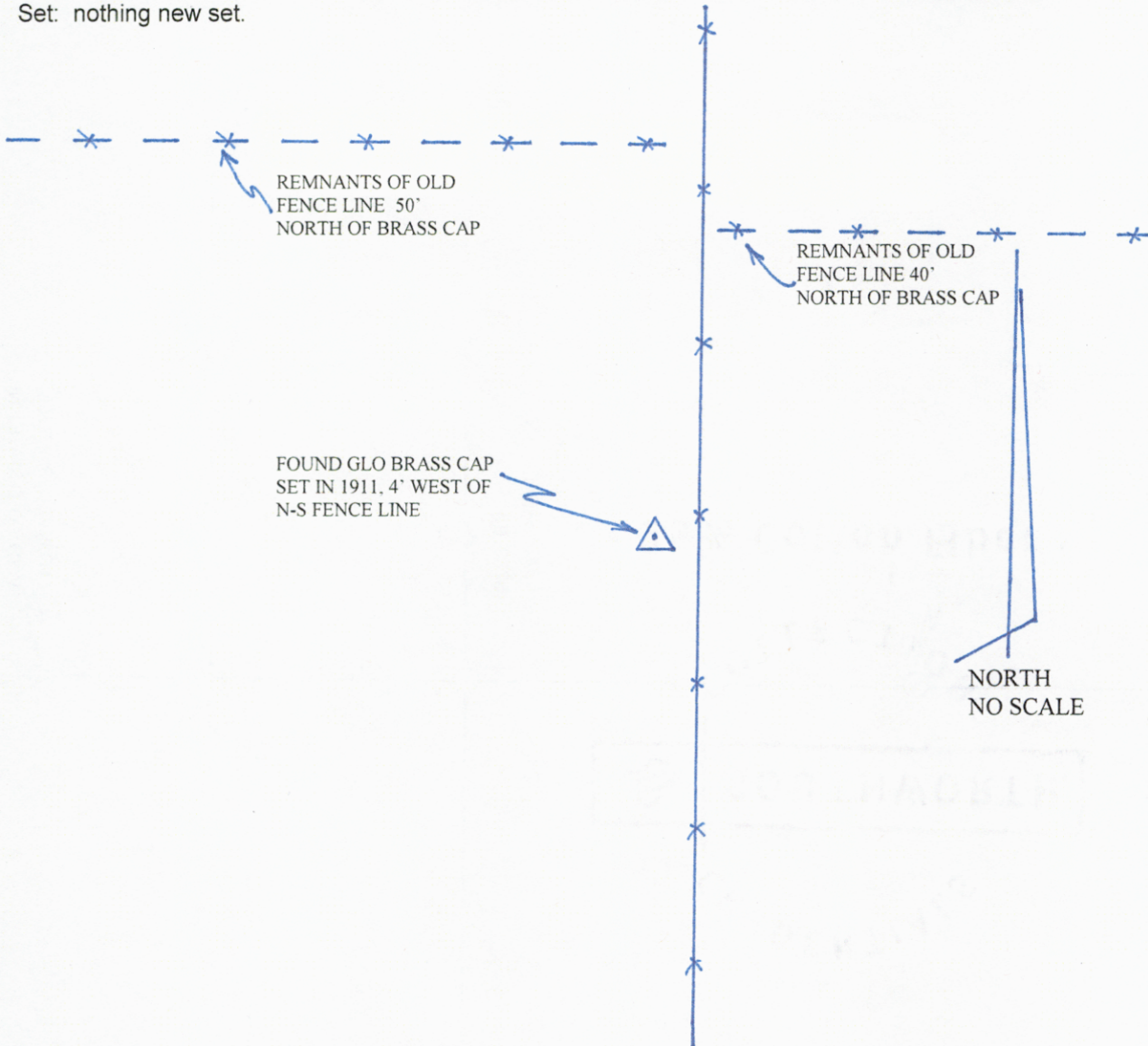
State of Wyoming Corner Record

(In compliance with the *CORNER PERPETUATION AND FILING ACT*, Wyoming Statutes, 1997, Section 33-29-140, et seq., and the Rules and Regulations of the Board of Registration for Professional Engineers and Professional Land Surveyors)

Reverse side of this form may be used if more space is needed.

Record of original survey and citation of source of historical information (if corner is lost or obliterated). Description of corner monumentation evidence found and/or monument and accessories established to perpetuate the location of this corner. Sketch of relative location of monument, accessories, and reference points with course and distance to adjacent corner(s) (if determined in this survey). Method and rationale for reestablishment of lost or obliterated corner.

Closing Corner: Sections 21 & 22 on the WYO/COLO State Line, T12N, R61W, 6th PM, Laramie County, Wyoming.
 GLO record: "...iron post, 3' long, 2 ins.diam., 2 1/2 ft. in ground...and mark on the brass cap on the post."
 Found: 1911 GLO brass cap in good condition with what appears to be original stone lying alongside.
 Set: nothing new set.



SEE MAP ON BACK OF THIS PAGE FOR TIES TO SURROUNDING CORNERS.

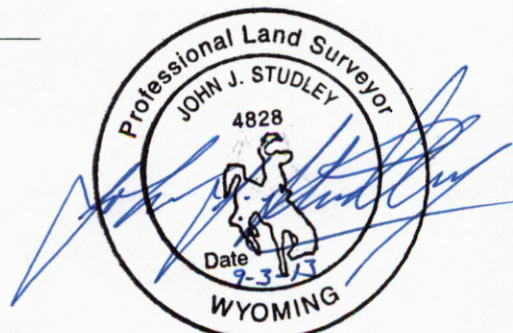
Date of Field Work: JULY 2013 Office Reference: _____

CROSS INDEX DIAGRAM

	1	2	3	4	5	6	7	8	9	10	11	12	13	14	15	16	17	18	19	20	21	22	23	24	25
A																									
B																									
C		6		5		4		3		2		1													
D																									
E																									
F																									
G		7		8		9		10		11		12													
H																									
J																									
K																									
L		18		17		16		15		14		13													
M																									
N																									
O																									
P		19		20		21		22		23		24													
Q																									
R																									
S																									
T		30		29		28		27		26		25													
U																									
V																									
W																									
X		31		32		33		34		35		36													
Y																									
Z																									

Land Surveyor / Firm / Address
Studley Land Surveying, PC
John J. Studley, PLS No. 4828
615 West Dale Blvd.
Cheyenne, WY 82009
 Telephone: 307-287-4755

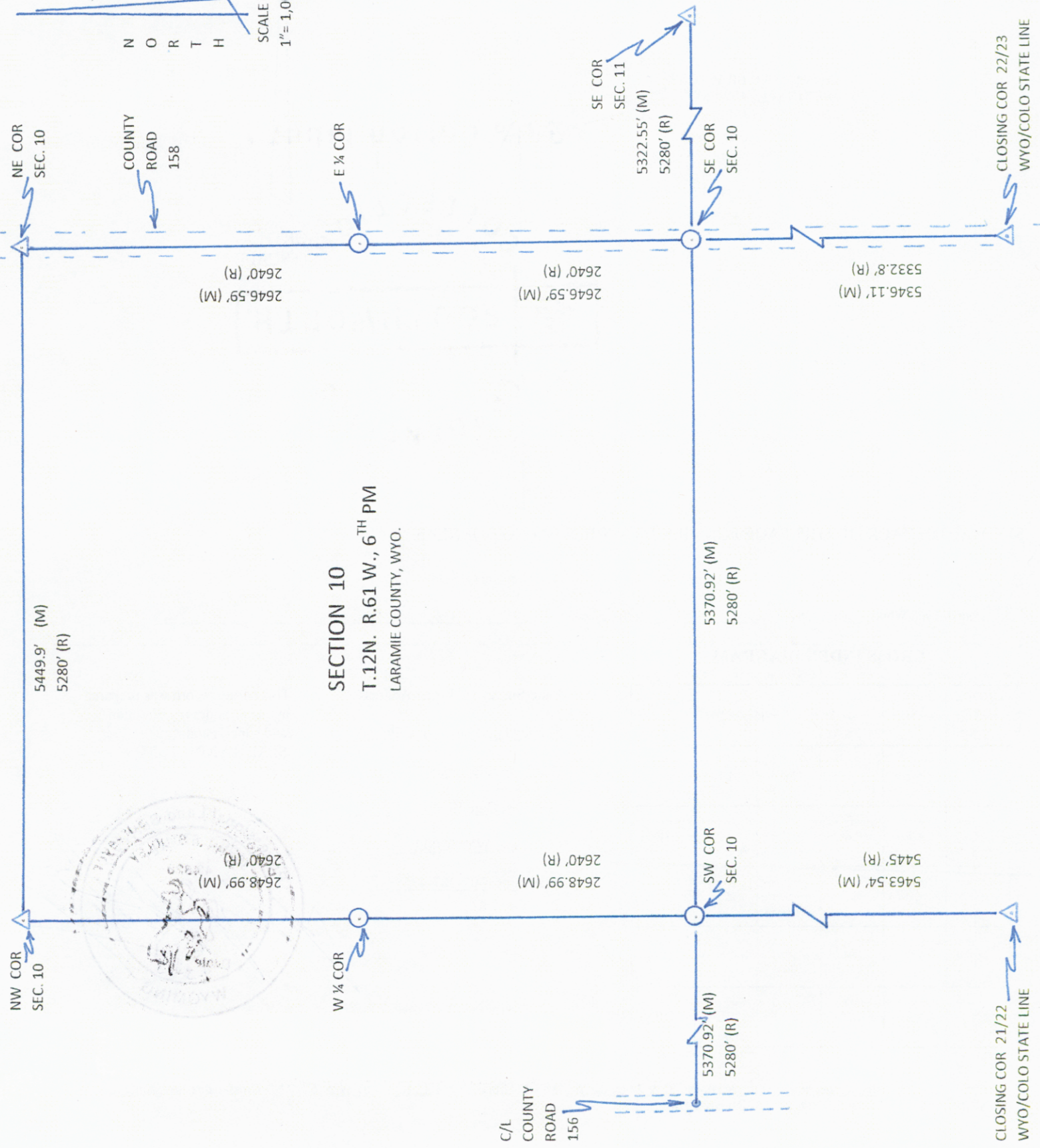
This corner record was prepared by me or under my direction and supervision.
 SEAL & SIGNATURE



RECORDED 9/03/2013 AT 9:59 AM REC# 623226 BK# 2356 PG# 685
 DEBRA K. LATHROP, CLERK OF LARAMIE COUNTY, WY PAGE 1 OF 2



N O R T H
 SCALE
 1" = 1,000'



C/L
 COUNTY
 ROAD
 156